

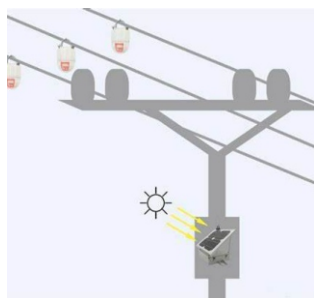


FAULT PASSAGE INDICATOR

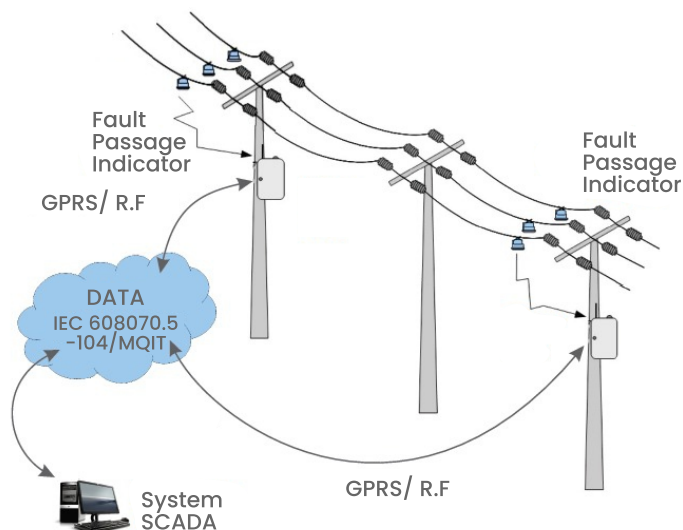
OVERVIEW

An Overhead Line Fault Passage Indicator detects and indicates faults that occur in an electrical distribution network. A Fault Passage Indicator is installed under live conditions with the help of a hot stick and an adapter. Our Fault Indicators for overhead lines are smart devices that are mounted directly on the line or on the pole to indicate the position of a fault which causes permanent or transient outages. The fault indicator installed on the overhead lines, which clipped on each phase so that to detect current and Voltage signal in this phase using itself clipped line structure. Through the low-power chip, it completes current calculation, short circuit, ground fault detection and through built-in low-power RF modules achieves short distance wireless communication.

POWER SOURCES








Solar Powered C-FPI Auxilliary PT Powered C-FPI



- > Monitoring of all phases 24 X 7 for fault occurrence
- > Line Parameters Monitored
 - Load Current
 - Fault Current (Maximum of 1200)
 - Line Status (On / Off)
- > SMS Facility
 - Status SMS at set intervals(configurable)
 - SMS Report on Multiple Numbers
- > Indicator Reset
 - Automatic Current Reset-on restoration of power.
 - Manual Reset - press button on FPI
 - Remote Reset- through web application
 - Time Reset - Configurable per client requirement to after a specified interval even if power has not been restored.
- > Parameters Displayed in SCADA
 - Load Current of all phases
 - Fault Occurrence
 - Fault Current - Short Circuit - Earth Fault
 - DTU Battery
 - DTU Solar Panel Charging Voltage
- > Regular update of parameters to SCADA Servers

TECHNICAL PARAMETER

	N-FPI	N-FPI	C-FPI	C-FPI
				
• Line Voltage	11KV	33 KV	11 KV	33 KV
• Rated Current	630 A	800 A	630 A	800 A
• Short Time Withstand Current	12.5 KA	25 KA	12.5 KA	25 KA
• Protection Level	IP-67	IP-67	IP-66	IP-66
• Frequency	50	50	50	50
• Reset Time	Auto	Auto	Settable	Settable
• Weight	360 gm	550 gm	360 gm	550 gm
• Battery	3.6v	3.6v	3.6v	3.6v
• Operating Temperature	-25°C To 70°C	-25°C To 70°C	-25°C To 70°C	-25°C To 70°C
• Battery Operating Hours	1000 Hrs	1000 Hrs	1000 Hrs	1000 Hrs
• Communication	No	No	Yes	Yes
• Visibility Angle	360°	360°	360°	360°
• Flash Period For Permanent Fault	1 Flash Every 3 Sec	1 Flash Every 3 Sec	1 Flash Every 3 Sec	1 Flash Every 3 Sec
• Flash Period For Transient Fault	2 Flashes Every 3 Sec	2 Flashes Every 3 Sec	2 Flashes Every 3 Sec	2 Flashes Every 3 Sec
• R.F. Range	No	No	100m	100m
• Light Intensity	40 Lumens	40 Lumens	40 Lumens	40 Lumens
• SMS Update	No	No	Yes	Yes

CLIENTELE



SUGS LLOYD PRIVATE LIMITED

0120-4558247 sales@sugslloyds.com
C-96, First Floor, Sector-2, Noida- 201301